

PRS BULLETIN



Letters Home

14th March - 17th April 2026

Whole School

[IAT Electrical Works Update, 15th April](#)

[3G Pitch 26 MUGA Postponed, 10th April](#)

[CRY Screening, March 2026](#)

[Bucks Immunisation, March 2026](#)

[Smartphone policy across schools in High Wycombe and Princes Risborough](#)
[Arbor top-up reminders](#)

Sixth Form

[PRS Reporting Attainment Progress in Y13, AP2 Mock Results, March 2026](#)

Year 11

[Brook Visit Year 11](#)

[Year 11 Progress Evening 18th March](#)

Year 8

[HPV Immunisation Y8](#)

Year 7 - Year 11

[PRS Uniform Reminder March 2026](#)

REMINDERS

As we head into Exam season, we would like to remind students to look after themselves and adopt a positive exam routine. Please ensure they:

- arrive at school on time
- have all their equipment (in a transparent pencil case or bag)
- bring a water bottle, (transparent with any labels removed)
- speak to someone if they are feeling overwhelmed.

The exam timetable can be found on the [school website here](#). This now includes the Y10 and Y12 mock exam timetable.

Finally, we want to wish all our students the very best of luck - stay calm, stay focused - you can do this!

Coming Up...

20th April

22nd April

24th April

16th May

27th May

Year 11 Macbeth Theatre trip

Year 11 Jekyll & Hyde Theatre trip

Bronze DofE Practice Expedition

Bronze DofE Qualifying Expedition

Gold DofE Practice Expedition



FRIDAY FEATURE

Attendance at PRS

At Princes Risborough School, our motto is clear: we want every student to **Aspire and Achieve**. To reach those goals, consistent attendance is the foundation. However, we also know that for some, the journey to school can be a mountain to climb.

We are committed to being **Positive, Responsible and Respectful** in how we support our families. We see the effort you put in, and we want to celebrate every step of progress, whether that is maintaining a perfect record or making a brave return after a difficult period.

Why Every Day at PRS Matters

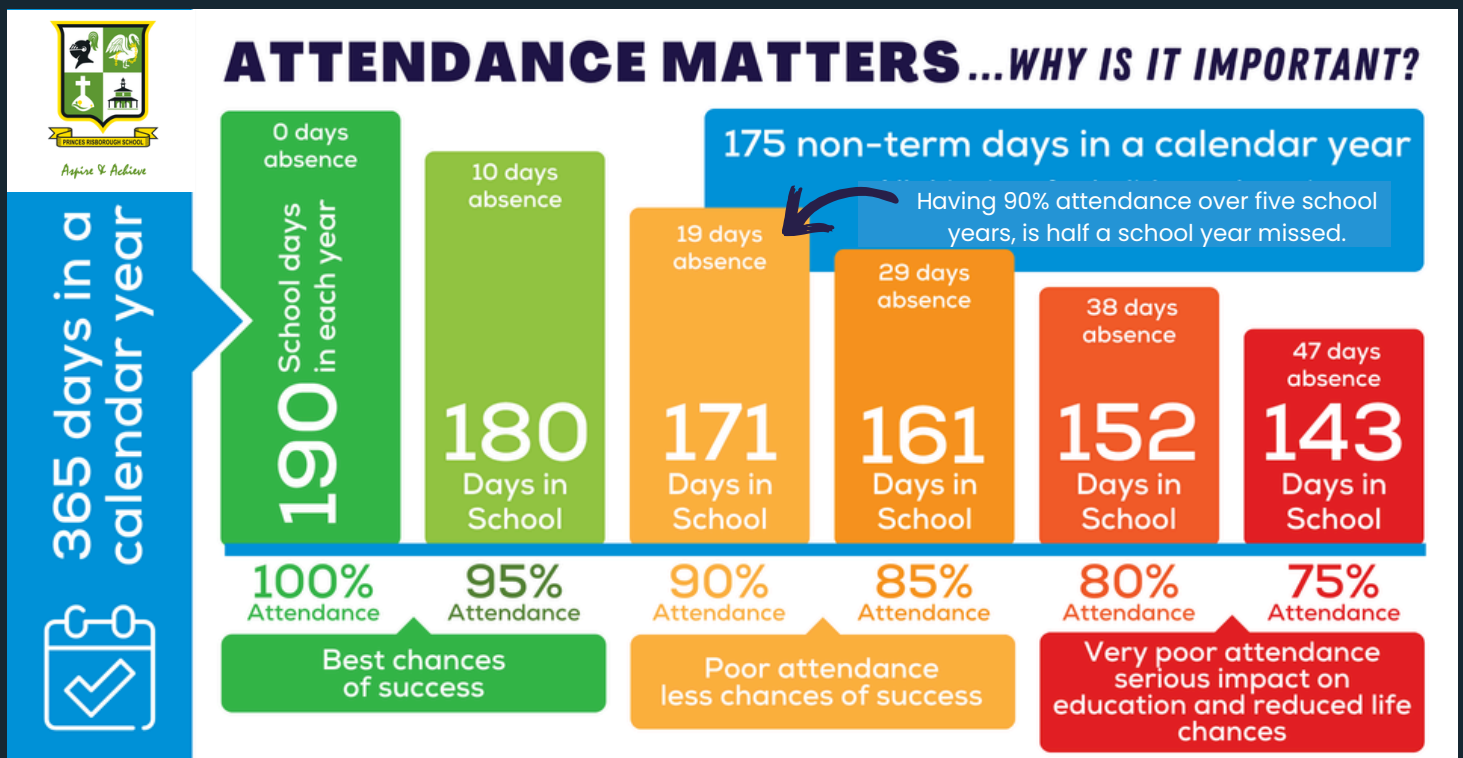
We advocate for regular attendance because we want our students to have every advantage:

- Academic Achievement
- Social & Emotional Growth
- Safety and Well-being
- Future Success

Catching the 'Flicker': A Focus on Weekly Change

We are refreshing our approach to focus on '**Weekly Change**'. Our goal is to catch the 'flicker' of a decline in attendance before it becomes a 'flame.'

We aren't just looking at a final percentage; we are looking for any negative shift so we can step in and help immediately. Equally, we are looking for positive shifts, we want to praise and recognize every bit of progress. If a student's attendance is improving, we want them to know we've noticed their hard work and their commitment to aspiring for better.



DID YOU KNOW? A two week holiday in term time means that the highest attendance you can achieve is 94.7%

THE FORM TUTOR: YOUR 'FIRST RESPONDER'

Because your child's Form Tutor has the strongest relationship with your family, they act as the "first point of call" for our proactive support:

- **Supportive Check-ins:** If there is a negative shift in weekly attendance, the Form Tutor will conduct a brief, supportive 'Check-in Call' (directed by the Head of Year) to identify any barriers.
- **PRS 'Return to Work' (RTW):** Upon a student's return, the tutor will conduct a 1-to-1 discussion. This is a respectful and supportive moment to ensure your child feels welcome and ready to settle back into PRS life.

We Are In This Together

At PRS, we know that attending school is not easy for everyone. Whether your child is maintaining 100% or working hard to improve their consistency, we see that progress and we celebrate it. If you are facing challenges at home, please reach out to your child's Form Tutor. We are here to listen, to help, and to ensure that every student has the support they need to **Aspire and Achieve**.

Together, we make every day count at Princes Risborough School.

The PRS Attendance Team

**MOMENTS
MATTER,
ATTENDANCE
COUNTS.**



[Click here to sign up or login.](#)

Access your SOCS account to see information about extra-curricular activities, sports fixtures and performances.

Innovate IFG

What's on the menu?

w/c 20 Apr. [\[Week 2\]](#)

w/c 27 Apr. [\[Week 3\]](#)

YEAR 11 PROM

JOIN US FOR AN UNFORGETTABLE NIGHT OF CELEBRATION TO MARK THE END OF YOUR PRS JOURNEY.

7:30pm Wednesday 17th June 2026

Concludes @10:30pm Guests asked to depart by 11:00pm

Venue: Aylesbury Rugby Club, HP22 5RN

Dress Code: Formal (Suits, Gowns, and your best prom looks!)

RSVP by: 29th May 2026



eBooks & Audiobooks

Anywhere, Anytime



<https://prs.eplatform.co/>

Borrowing eBooks & Audiobooks has never been so easy

- 1 Download the ePlatform app from your app store
- 2 Find our library and log in using your library ID
- 3 Browse and borrow to read or listen on your device



Login information:

Username: this is your school email address, for example:

studentname@prsbucks.com

Password: Library1

guild of parents

TOMBOLA DONATIONS

We are once again
**collecting tombola
prizes!** If you have any
unwanted items that
would be suitable, please
let us know!

Or drop items into the
school office.



The Guild of Parents needs you!

We are in need of a new committee for next year to help continue the fundraising for the school. Please get in touch if you think you can help in any way.

Most roles can be done from the comfort of your home and with enough volunteers the time commitment is minimal.

If you don't want to join the committee, but would still like to help in some way, please email us!

The money raised by the GoP is vital to support the school and the learning activities of all the students. Please get involved!

Uniform

If you have any branded uniform items to pass on please email and we will let you know how to donate.



Year 7 Parents

A Year 7 WhatsApp group has been set up by one of our volunteers. If you'd like to be added, please email with your details.

gop@prsbucks.com

www.facebook.com/PRS.GoP

@prs_guildofparents

Support us through
Buckinghamshire Lottery -
www.buckinghamshirelottery.co.uk



SEND
Coffee
& Chat

9.30am - 11.30am

**For Parent/Carers
/Grandparents
of SEND Children**

FRIENDLY GROUP, SHARE EXPERIENCES, TIPS, KINDNESS

Thurs. 23rd April / Thurs. 21st May
9.30am - 11.30am

The Walled Garden, West Wycombe



yetinuggets.co.uk
#yetinuggets

